



WEAVERS
FACTORY



Rod Billington
A Light Exists in Spring
July 9th - August 14th, 2022

The Weavers Factory, 13 New Street, Uppermill, OL3 6AU
Thursday - Sunday, 10am to 4pm | www.weaversfactory.co.uk



WEAVERS
FACTORY

Rod Billington | A Light Exists in Spring

Landscape artist Rod Billington explores the fragile relationship between nature and the built environment. Will our rampant love of consumerism be our downfall, or will the next generation bring light and hope?

“I’ve always been fascinated by how the built environment relates to nature and how despite our best efforts, nature always finds a way to become an integral part of what we create.

We find this in a lot of imagery, where man’s transient journey through this life is wiped out and cleaned away, all evidence of where we’ve been, gone in a flash.

When I think of buildings and art, I think of the Maya civilisation. They were the most sophisticated and highly developed people in the pre-Columbian Americas, and look what happened to them. The Mayans seemed to think that civilisations are wiped out every 5,000 years and I often wonder if that’s about to come true for our society.

However much we build and build, it’s only a matter of time before nature gets its revenge and takes over, because frankly we’ve pushed the world to its’ limits.

We’re taking out more than we’re able to take out safely. We’re abusing it and as a result we’re causing our own demise with floods and global warming eating up our coastline. And all that does is reaffirm the Mayan philosophy that we’re all doomed.

Whether we completely disappear like they did depends on us sorting ourselves out pretty quickly and taking our heads out of the sand and facing up to reality.

I would like to think there’s hope for us, but at the moment it just seems we’re more interested in having a new house or a new car than saving the planet. Technology sees us slowly cutting ourselves off from one another and we no longer talk directly to the outside world.

We’re also breaking down our ability to cope, if we run out of power I don’t know what would happen. We live in an artificial bubble which is about to pop.”

- Rod Billington

Profile

Name

Rod Billington

Born

1942, Rochdale

Lives

Taunton, Somerset

Medium

Painting, ceramics

Solo Exhibitions

Stock Gallery, London.

Cape Art, Cape Cod USA.

Hiscock Gallery, Portsmouth.

Brewhouse Gallery, Taunton.

Group Exhibitions

Affordable Art Fair, London.

The Mall Galleries, London.

Battersea Art Fair, London.

Chelsea Art Society (Agnes Reeve Memorial Award).

Redfern Gallery, London.

Enid Lawson Gallery,

Kensington.

St. John’s Smith Square

Gallery, London.



A Light exists in Spring
Not present on the Year
At any other period
When March is scarcely here

A Color stands abroad
On Solitary Fields
That Science cannot overtake
But Human Nature feels.

It waits upon the Lawn
It shows the furthest Tree
Upon the furthest Slope you know
It almost speaks to you.

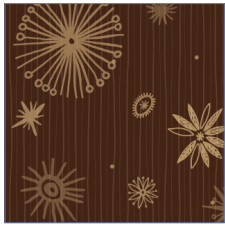
Then as Horizons step
Or Noons report away
Without the Formula of sound
It passes and we stay.

A quality of loss
Affecting our Content
As Trade had suddenly encroached
Upon a Sacrament.

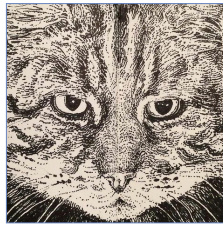
Emily Dickinson



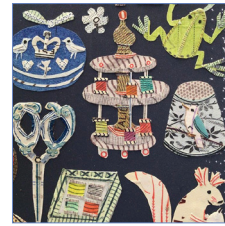
Exhibitions 2022



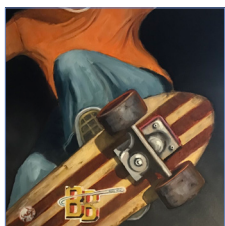
Joan Charnley
Horizontality and Verticality
Jan 8th - Feb 13th



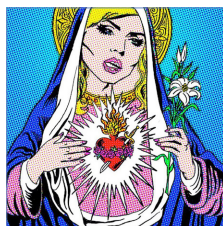
John Hewitt
Quadrupeds Quadrupled
Feb 19th - April 3rd



Sarah V Battle
Bibelot
Feb 19th - April 3rd



Anthony Marn
Seasons in the Sun
April 9th - May 22nd



Sina Sparrow
Sanctified
May 28th - July 3rd



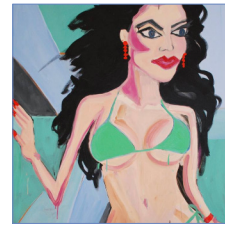
Rod Billington
A Light Exists in Spring
July 9th - Aug 14th



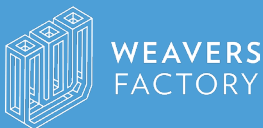
Barbara Sykes
The Human Condition
Aug 20th - Sep 25th



Mark Mcleish
It Is Never What You Did or Didn't Do Oct 1st - Nov 6th



Sally Driver
Was There Ever a Bud So Fair?
Nov 12th - Dec 23rd



WEAVERS
FACTORY

The Weavers Factory is a contemporary art gallery in Saddleworth. Originally the home of 1950s textile designer Joan Charnley, it has been lovingly converted into a multi-use art space with a gift shop, tea bar, hidden garden and two galleries www.weaversfactory.co.uk

The Weavers Factory, 13 New Street, Uppermill, Greater Manchester, OL3 6AU
Curator Julian Bovis julian@weaversfactory.co.uk | Manager Nigel Durkan nigel@weaversfactory.co.uk
Gallery Assistant Hayley Barker | Gallery Technician Edward Gray | Patron Joan Charnley